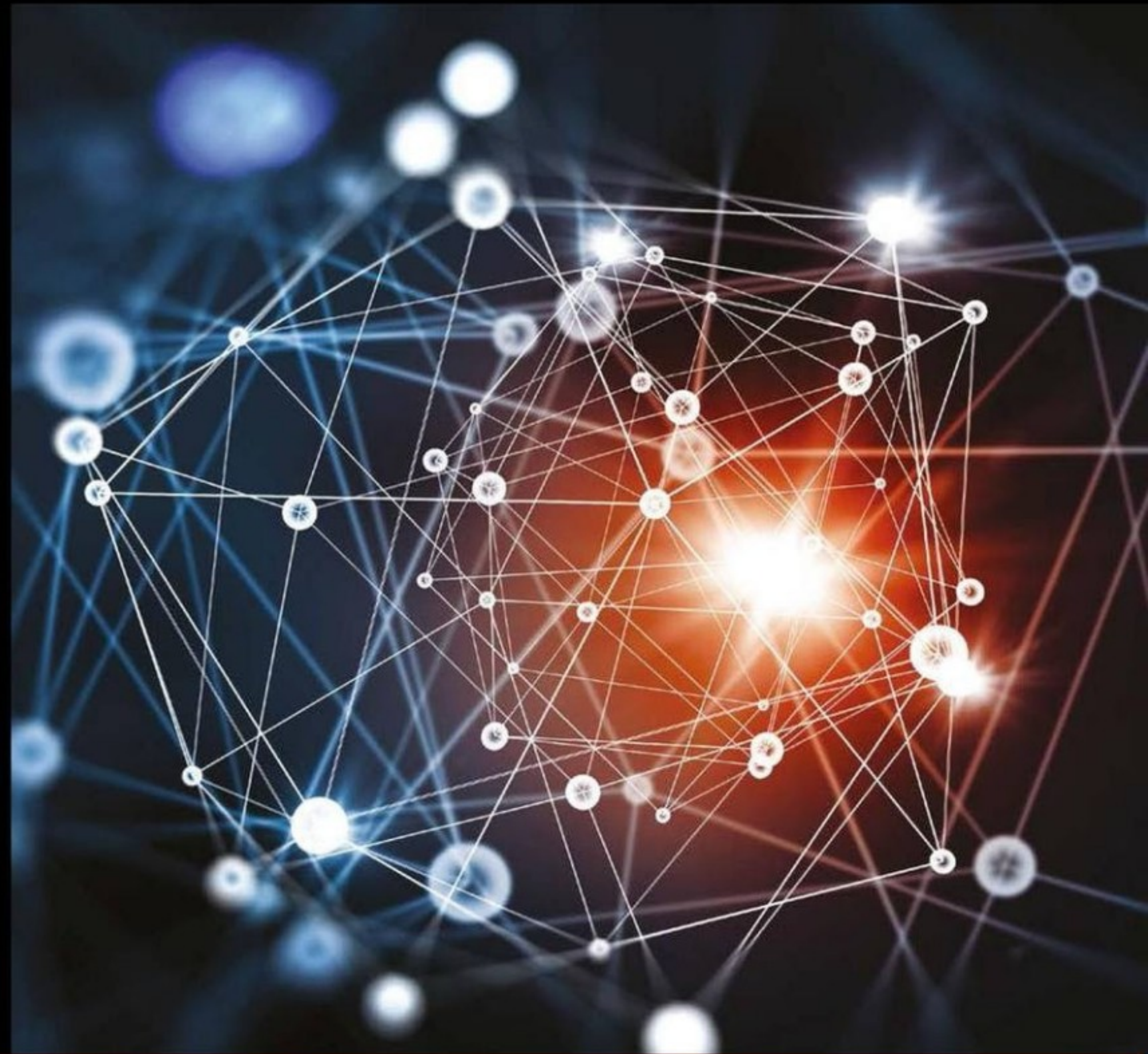


The Epistemic Insight Initiative

Creating Epistemically Insightful Learning Experiences in Primary Classrooms –
What Do Maps Tell Us?



<https://tinyurl.com/lasar-cpd-maps>

Please fill in our opening survey whilst we wait for others to join.

Getting to know each other. What role do you have?



EYFS/ KS1 teacher/practitioner



KS2 teacher



Primary Leadership



Teaching Assistant



HE lecturer/researcher



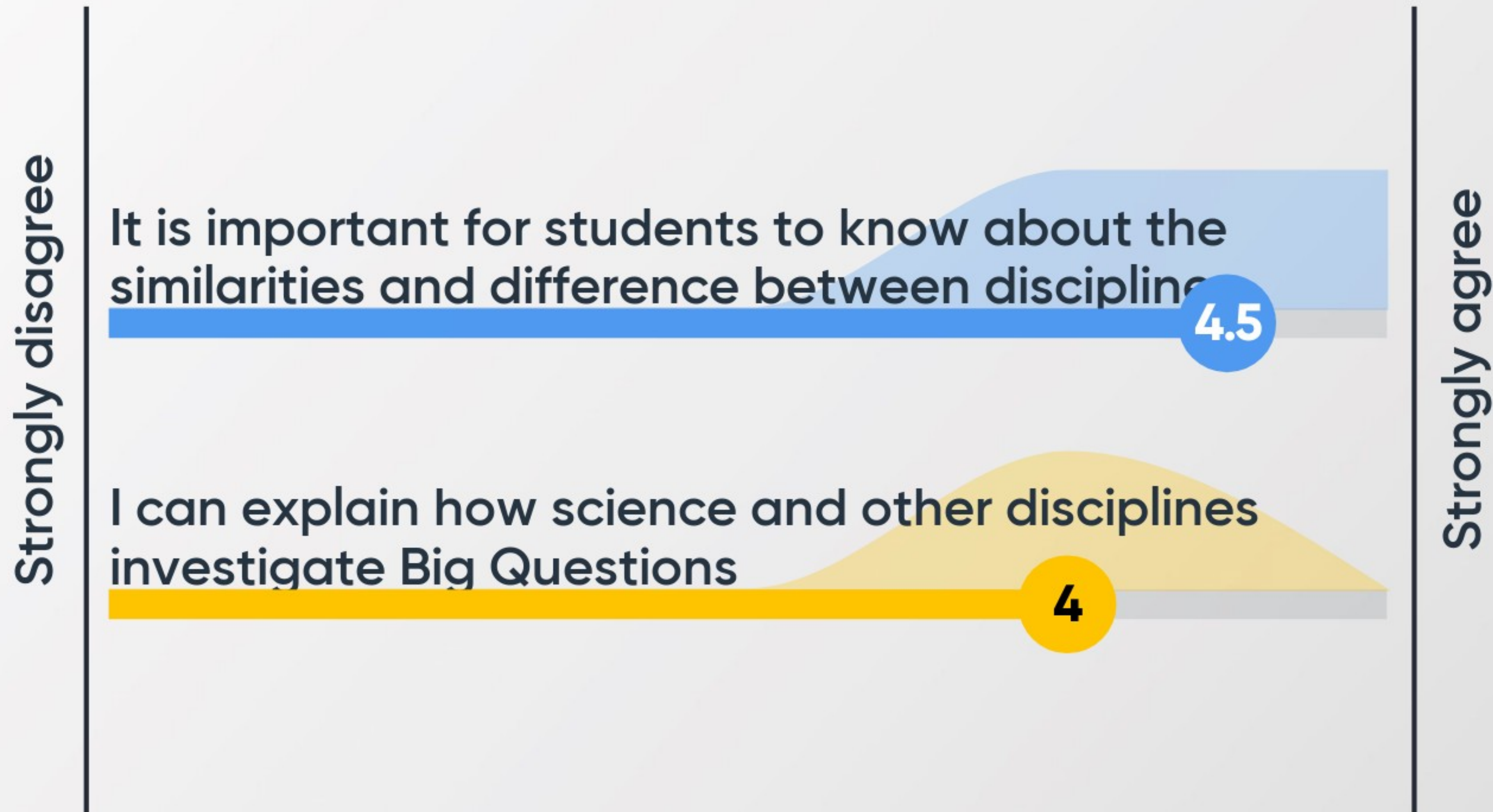
ITE student (PG, UG or schools direct)



Too unique for labels :)

Epistemic Insight

What is your current view?



School
compartmentalisation/
subject fragmentation

Emphasising boundaries
without explaining links/
powers & limitations

Digital “collapse” of
boundaries

“knowledge” or evidence is
removed from context in the
way search results are presented

My students' experience of making links across subject/ disciplinary boundaries is...

They sometimes pick up on cross curricular links sometimes I point it out to them

- Knowledge about knowledge – particularly methods and norms of thought within disciplines and interaction between disciplines

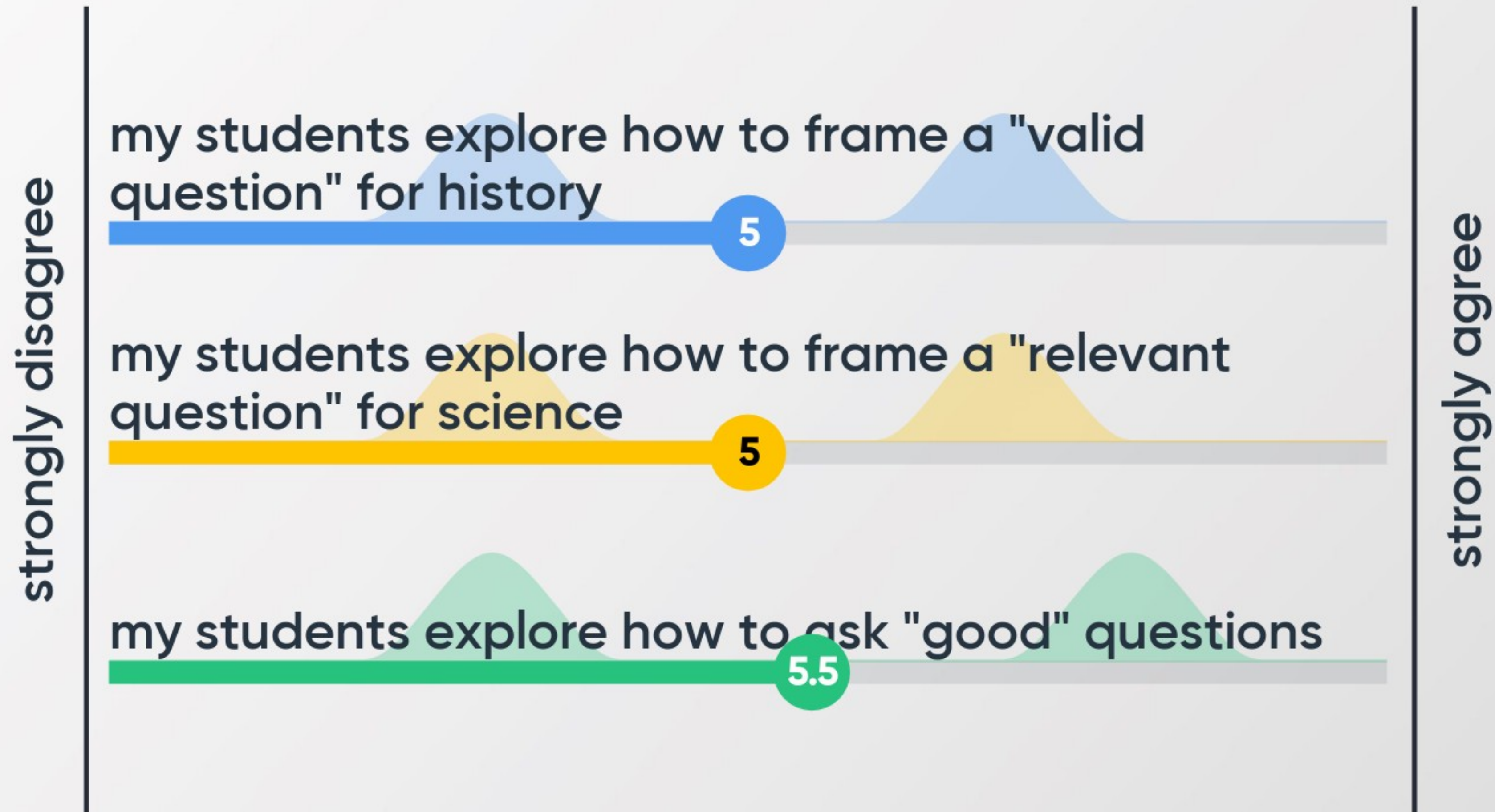
(intellectual virtue –teachable & assessable)

- Moving beyond topic work through recognising the distinctiveness of and interaction between the disciplines

(pedagogical approach)



Teaching about "preferred questions"





1. How does my/this discipline **interpret** the question?
2. How does my/this discipline **investigate** the question?
3. How would my/this discipline know it has **a good answer?**

*Methods questions and norms of thought not content

What do maps tell us?



Image source : Antique Double Hemisphere World Map by Samuel Dunn 1794 @ www.ilovemaps.co.uk



Epistemic Insight Which disciplines can inform our thinking about the question "what do maps tell us?"

history

languages

geography

the arts

science

Epistemic Insight
If we understand maps as telling stories – what kinds of stories might we see in maps?

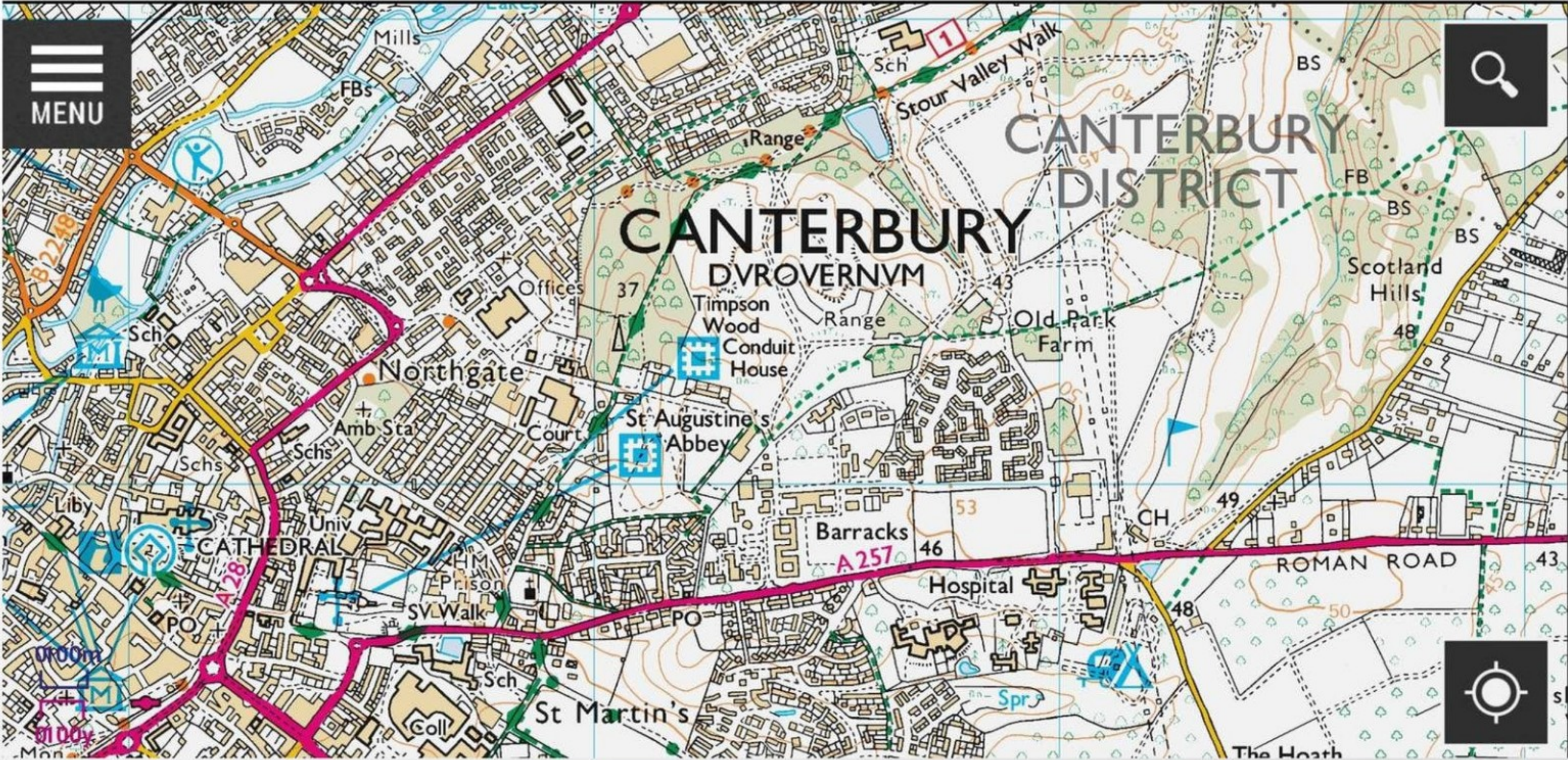
What kinds of stories can you tell?

- Describe Places – explore & Navigate the world
- Protect Lives – showing where shipwrecks, unexploded bombs etc
- Revealing Patterns – showing patterns of language use? Shops?
- Visualizing the World – exploring different landscapes across the world
- Scientific Reporting – seeing how the world has/is changing due to climate change
- Recounting History – understand the geographical context of historical events



https://www.locatinglondon.org/index.html?utm_medium=website&utm_source=archdaily.com





Canterbury OS
Map:screenshot from
OS Mapfinder App

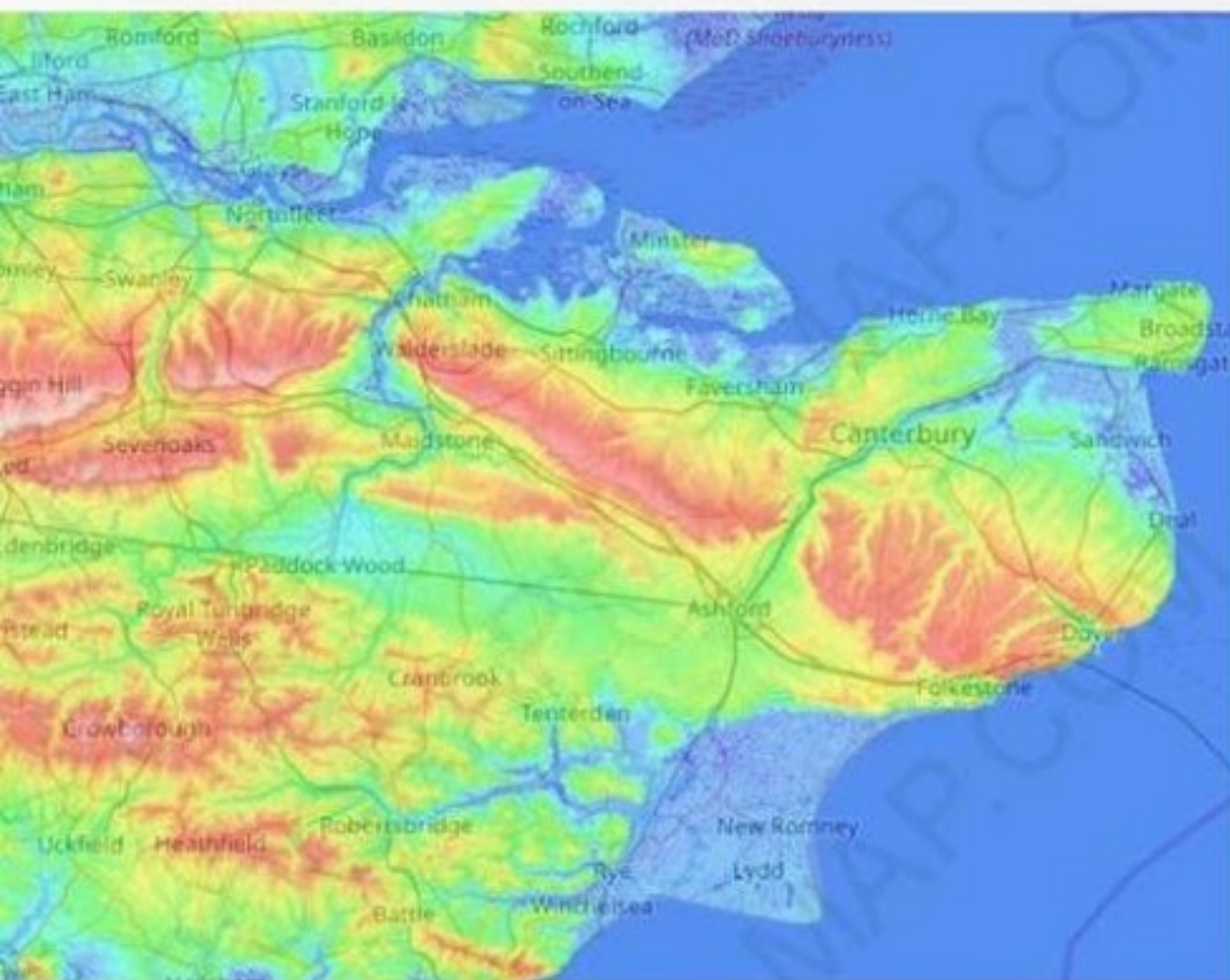


How can we use maps to develop understanding of information displayed on maps – including symbols and topography



Image source www.tozan.meduim.com

Is this a full description of the landscape?



Free topographic map from <https://en-gb.topographic-map.com/maps/sm4c/Kent/>

Depicting Reality?

Thinking about Scale

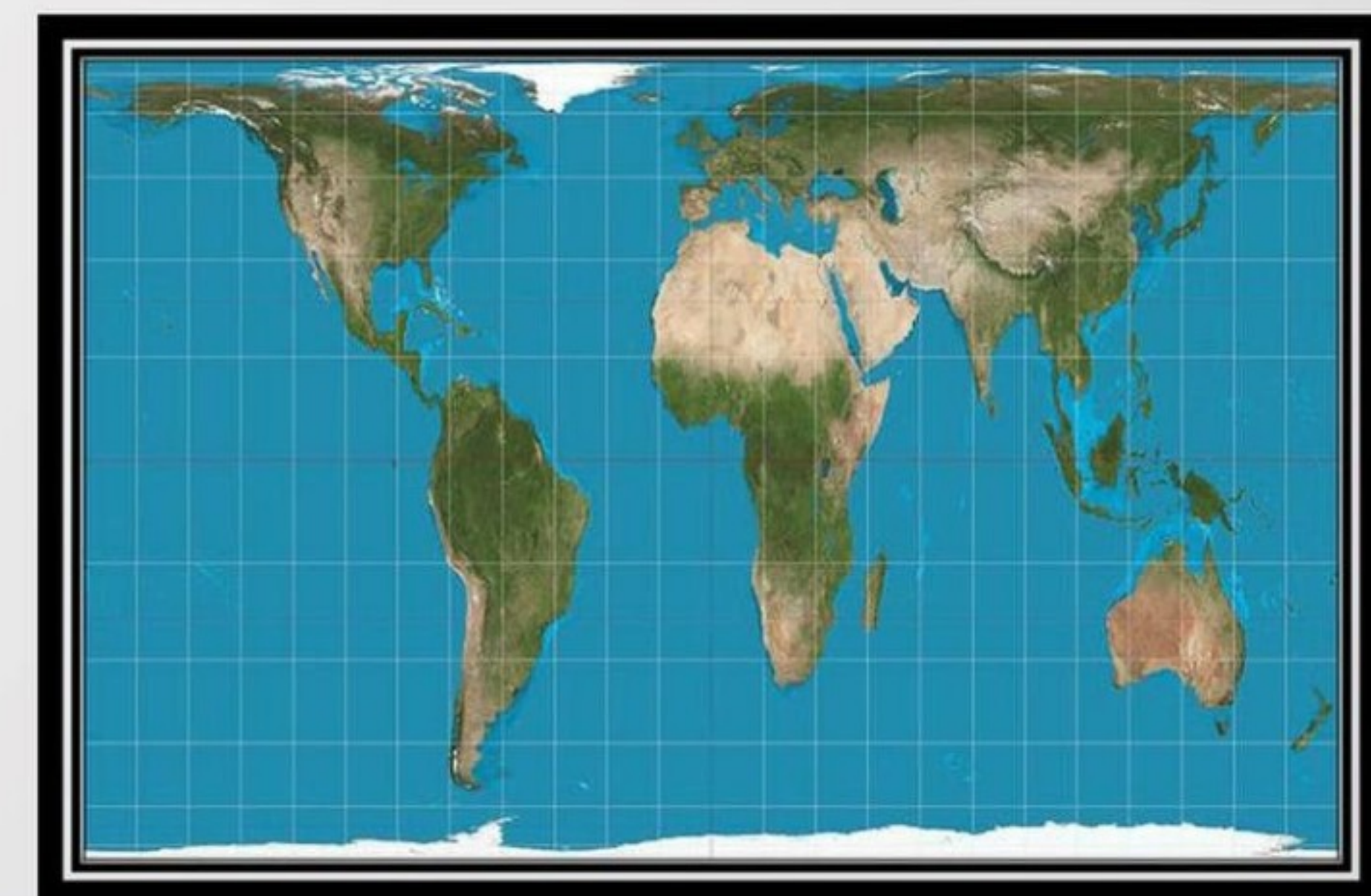


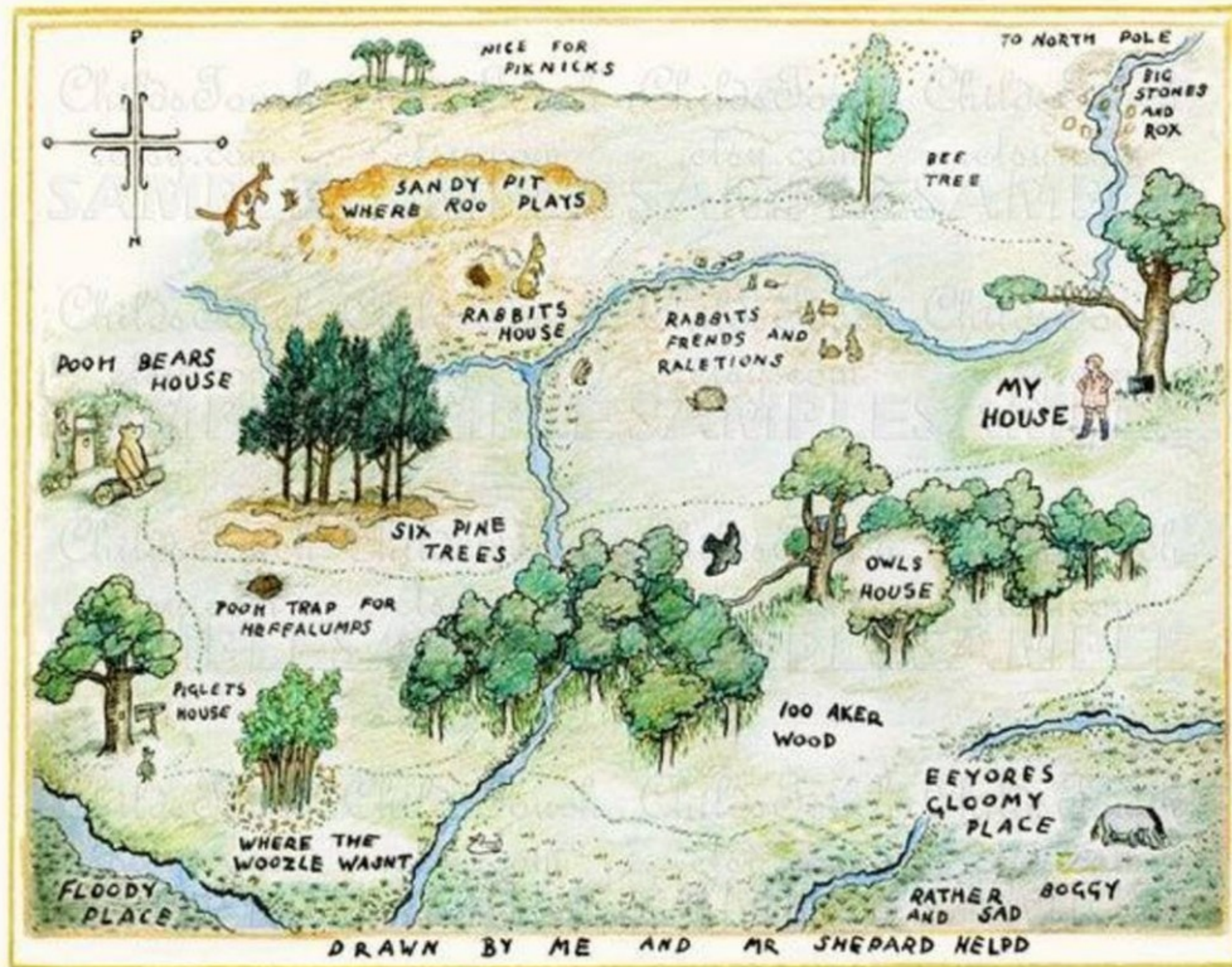
Image Source: Images - Daniel R Strebe futuremaps.com





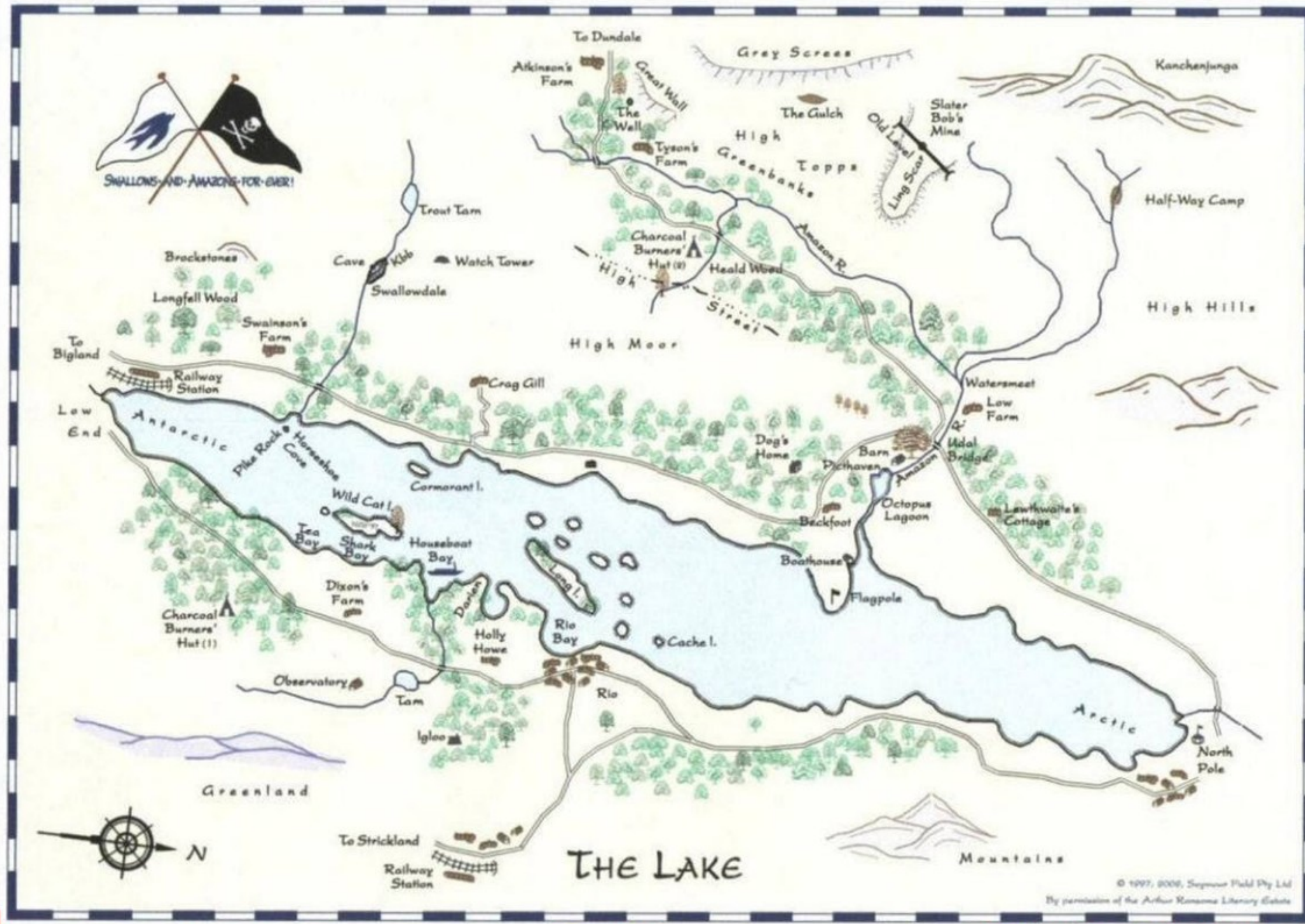
Maps used in works of fiction – what additional knowledge is being conveyed by the map that isn't included in the prose?

Map from Wheel of Time series - Drawn by Ellisa Mitchell (c) Bandersnatch Group



Maps used in works of fiction – How can fictional maps of real places be used in creative writing?

Image Source - copy of E.H. Shepard's 100 Aker Woods from Winne the Pooh by ChildsTouch at Etsy



How can fictional maps of real locations support students to explore the distinctive contributions different disciplines make?

Map of the Lake from Arthur Ransome's Swallows & Amazons by Mike Field @ arthur-ransome.fandom.com

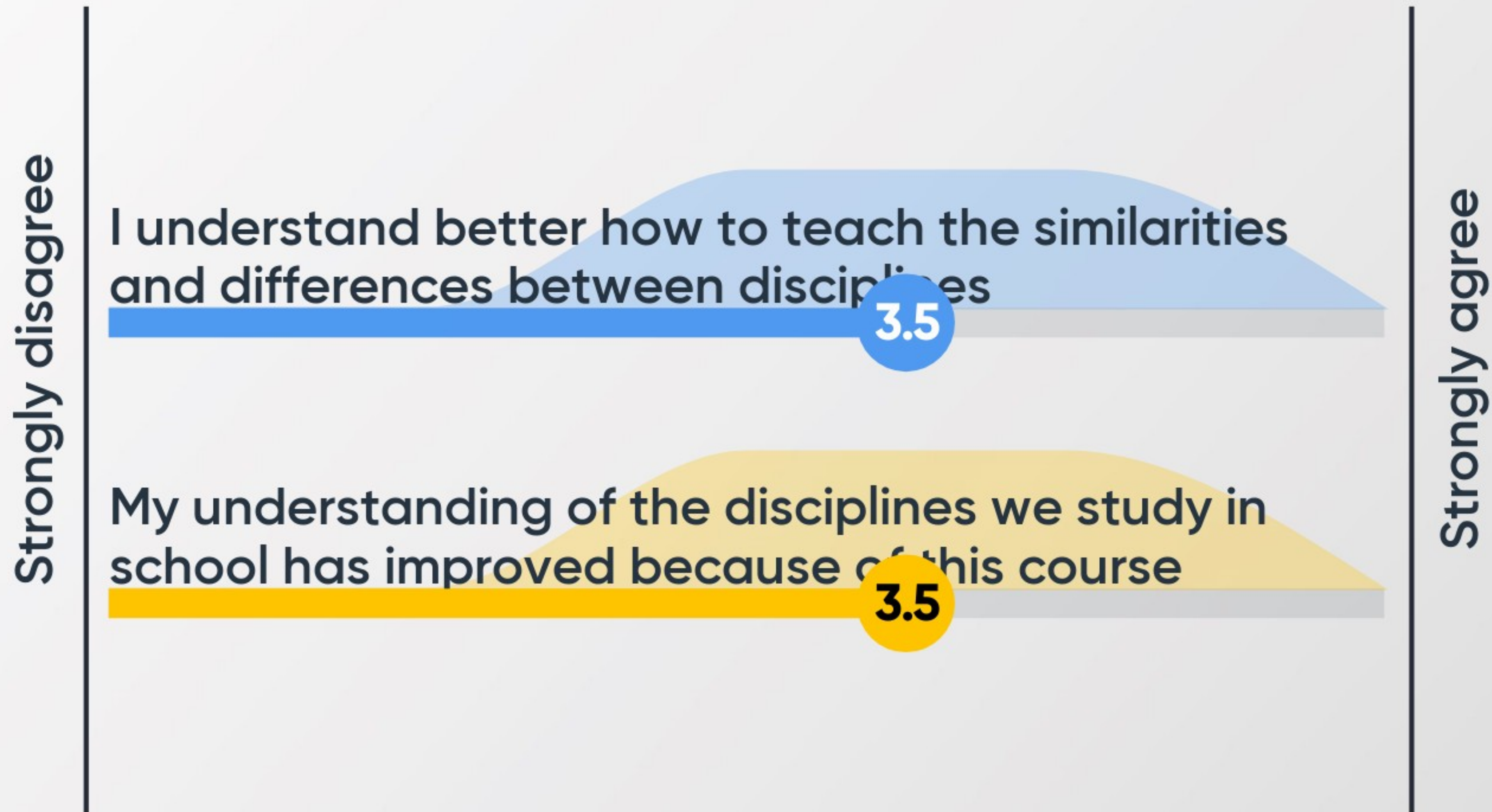


Epistemic insight

What questions do you now have about epistemic insight for your classroom?

Interesting to try to link the geography and English especially as we are using CLPE for our English planning across the school.

Following today's session:



Following today's CPD...

